

FCR 4

Office of the President
December 12, 2017

Members, Board of Trustees:

PROPOSED 2018-19 ROOM RATES
FOR UNIVERSITY-CONSTRUCTED HOUSING

Recommendation: that the Board of Trustees adopt the attached 2018-19 room rates for University-constructed housing.

Background: The recommended 2018-19 University-constructed housing rates are presented on the following pages. The recommended rates for University-constructed housing are necessary to generate revenue to fund anticipated operating costs.

The housing and dining rates established by the University's private housing and dining partners also are presented on the following pages for informational purposes only.

The 2018-19 rates for residence hall units constructed and managed by the University's private partner are in compliance with the lease agreements. These housing rates reflect a 3.0 percent increase for 2018-19.

The 2017-18 proposed rates for University-constructed housing reflect a zero percent increase for the 2005 constructed residence halls, a 3.0 percent increase for graduate apartments and Greek housing, and a range of zero to 3.0 percent for specialty apartments.

All students living in residence halls are required to purchase a dining plan. The dining rates and plans are based on the agreement with the University's dining partner. The 2018-19 dining rates reflect a 4.2 percent increase for the minimum, a 6.7 percent decrease for the all access plan, and a 3.4 percent increase for the RA Block 150 plan. New optional residential "all access plans" with varying amounts of 'Flex Dollars' are aligned with the 2018 opening of a new residential dining unit in the new Student Center.

Action taken: Approved Disapproved Other _____

**UNIVERSITY OF KENTUCKY
ROOM AND BOARD RATES**

HOUSING ¹

**Residence Halls and Greek Housing
Per Semester, Fall and Spring**

	2017-18	2018-19	% Change
<i>4-Person Suite (UK Premium Type A Units)</i>			
Per Person	\$3,700	\$3,700	0.0%
<i>4-Person Suite (P3 Type A Units)</i>			
Per Person	\$3,761	\$3,874	3.0%
<i>2-Bedroom Suite (UK Premium and P3 Type B Units)</i>			
Per Person	\$4,287	\$4,416	3.0%
<i>4-Bedroom Suite (P3 Type C Units)</i>			
Per Person	\$4,630	\$4,769	3.0%
<i>2-Bedroom Deluxe Suite (P3 Type D Units)</i>			
Per Person	\$4,723	\$4,865	3.0%
<i>4-Bedroom, 2-Bath Deluxe Apartment (P3 Type E Units-University Flats) ²</i>			
Per Person	\$4,727	\$4,869	3.0%
<i>2-Bedroom 1-Bath Deluxe Apartment (P3 Type F Units-University Flats) ²</i>			
Per Person	\$4,813	\$4,957	3.0%
<i>UK Greek</i>			
Double	\$2,627	\$2,706	3.0%
Single	\$3,940	\$4,058	3.0%
<i>Additional Break Housing Fees (Blazer, Wildcat Coal Lodge, and Chellgren Hall) ³</i>			
	\$78	\$80	3.0%
<i>Early Move-in Daily Rate</i>			
	\$23	\$24	4.0%

NOTES:

1. University-constructed housing is prefixed with 'UK'. Housing constructed and managed as part of the public-private partnership is prefixed with 'P3'.
2. University Flats and Boyd Hall are available during all academic recesses of the University (August 22, 2018 to May 3, 2019) to accommodate students who require housing during these periods.
3. Additional break housing fees for Blazer, Wildcat Coal Lodge, and Chellgren Hall to accommodate students who require housing during all academic recesses of the University (August 22, 2018 to May 3, 2019).

**UNIVERSITY OF KENTUCKY
ROOM AND BOARD RATES**

HOUSING

UK Summer School Housing

		2018	2019	% Change
<i>12-Week Summer School Session</i>				
	Double	\$2,373	\$2,444	3.0%
	Single	\$2,937	\$3,025	3.0%
<i>Monthly Summer Housing¹</i>				
	Double	\$791	\$815	3.0%
	Single	\$979	\$1,008	3.0%
<i>Daily Rate</i>		Pro-rated	Pro-rated	

1. Monthly Summer Housing is available during summer break – in a designated summer housing building – for students enrolled in the preceding spring term or the following fall term, but not enrolled in summer school.

**UNIVERSITY OF KENTUCKY
ROOM AND BOARD RATES**

HOUSING

**Apartment Housing
Per Month, Effective July 1**

	2017-18	2018-19	% Change
<i>Graduate Housing</i>			
<i>University Flats Graduate (P3)</i>			
Studio	\$929	\$957	3.0%
1-Bedroom	\$1,038	\$1,069	3.0%
<i>Greg Page Stadium View Family Apartments (UK)</i>			
2-Bedroom	\$732	\$754	3.0%
<i>Shawneetown (UK)</i>			
Efficiency	\$568	\$585	3.0%
1-Bedroom	\$658	\$678	3.0%
2-Bedroom	\$732	\$754	3.0%
<i>Lexington Theological Seminary (UK)</i>			
<u>625 S. Limestone</u>			
Efficiency	\$568	\$585	3.0%
1-Bedroom	\$658	\$678	3.0%
2-Bedroom	\$775	\$798	3.0%
<u>633 Maxwellton Court</u>			
Townhome	\$990	\$1,020	3.0%
<i>Roselle (Graduate)</i>			
Single Room	\$550	\$567	3.0%
<i>Specialty Apartments</i>			
<i>German House (UK)</i>			
Single Room	\$658	\$658	0.0%
1-Bedroom Apartment	\$756	\$756	0.0%
<i>Specialty Apartments (UK)</i>			
1-Bedroom (Patterson Hall)	\$700	\$721	3.0%
Daily Rate	\$30	\$31	3.0%
Studio 1-Bedroom (Patterson Hall)	\$775	\$798	3.0%
Daily Rate	\$30	\$31	3.0%
2-Bedroom (Roselle and Ingels)	\$1,000	\$1,030	3.0%
Daily Rate	\$40	\$41	3.0%

**UNIVERSITY OF KENTUCKY
ROOM AND BOARD RATES**

DINING

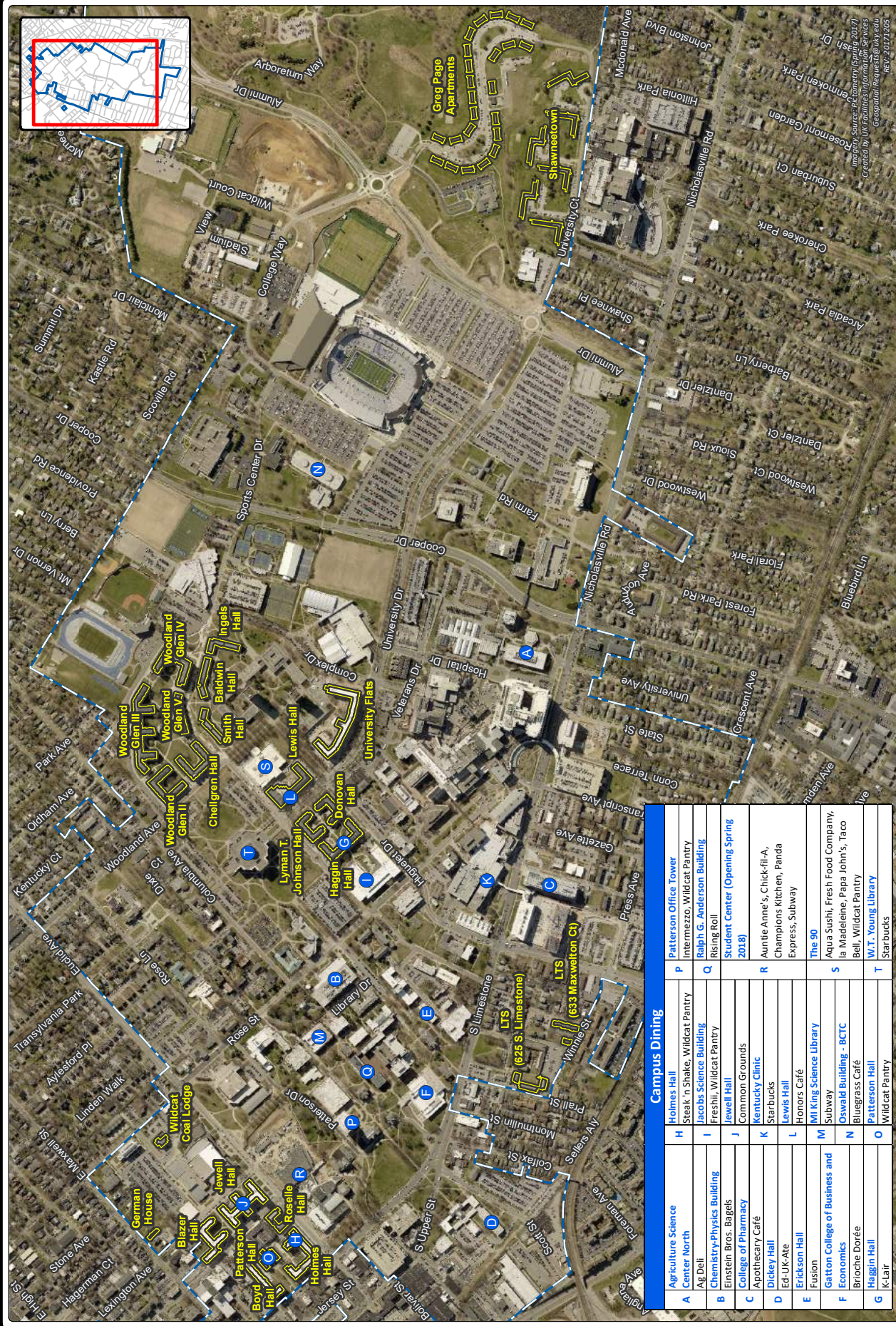
Dining will offer five dining plans – one minimum plan and four optional plans – to students living on-campus during 2018-19. These dining plans provide from ten meals per week to unlimited servings per week. One block plan of 150 meals per semester is available only for Resident Assistants (RA). The change in optional plans and rates are based on the agreement with the University’s dining partner and a transition from a fixed amount of block plans per week to all access plans in the residential dining facilities.

Each dining plan except one also includes ‘Flex Dollars.’ Flex Dollars can be used to purchase a la carte items at any of the more than 30 dining locations across campus. Flex Dollars may be carried over from the Fall to Spring semester.

Per Semester, Fall and Spring

	2017-18			2018-19			% Change	
	Avg. Meals Per Week or Per Semester (Block)	Flex Dollars	Rate	Avg. Meals Per week or Per Semester (Block)	Flex Dollars	Rate		
<i>Minimum Plan</i>	7 per week	\$200	\$1,464	10 per week	\$100	\$1,525	4.2%	
<i>Optional Plans</i>				All Access (\$0 Flex)	\$0	\$1,750	NA	
			22	All Access Blue (\$250 Flex)	\$250	\$1,975	NA	
	All You Care to Eat (AYCE)*	\$300	\$2,225	All Access White* (\$400 Flex)	\$400	\$2,075	-6.7%	
	Block 150 RA	\$500	\$1,450	150 RA	\$500	\$1,500	3.4%	
	2017-18 Prior Year Plans							
	10 per week	\$300	\$1,625	n/a	n/a	n/a	n/a	
	14 per week	\$300	\$2,000	n/a	n/a	n/a	n/a	
	Flexible Block 100	\$525	\$1,725	n/a	n/a	n/a	n/a	

*Default Dining Plan



Map Source: Geography (© 2017)
 Created by UK Facilities Management Services
 Geospatial Request: @uky.edu
 REV: 2017.205

Campus Dining	
A	Agriculture Science Center North
B	Chemistry-Physics Building
C	College of Pharmacy
D	Dickey Hall
E	Fusion
F	Gatton College of Business and Economics
G	Haggin Hall
H	Holmes Hall
I	Jacobs Science Building
J	Jewell Hall
K	Kentucky Clinic
L	Lewis Hall
M	Mil King Science Library
N	Oswald Building - BCTC
O	Patterson Hall
P	Patterson Office Tower
Q	Ralph G. Anderson Building
R	Starbucks
S	The 90
T	Wildcat Pantry



FCR 4 - PROPOSED 2018-19 ROOM RATES FOR UNIVERSITY-CONSTRUCTED HOUSING

